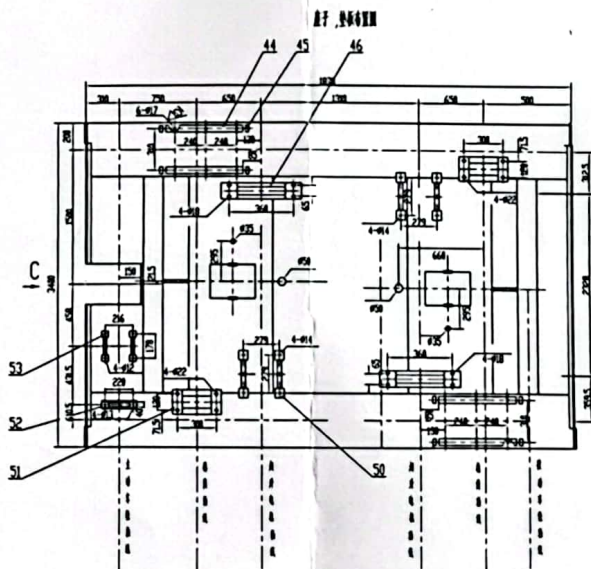
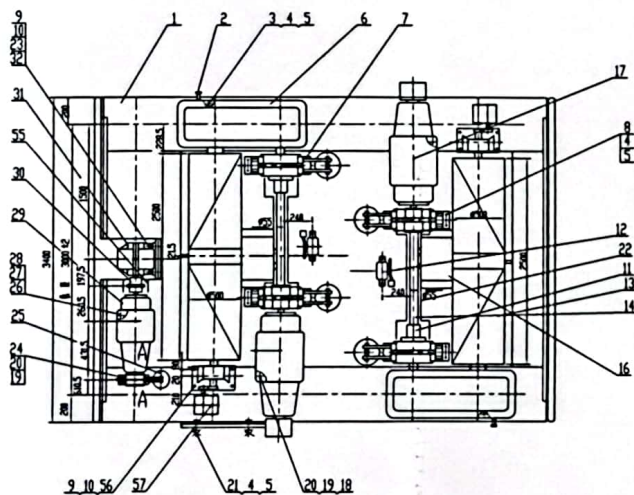
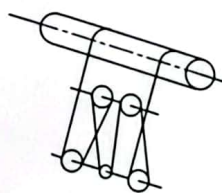
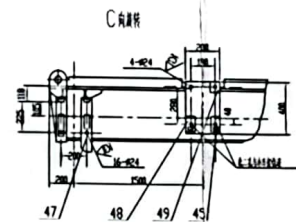


额定起重量 10t

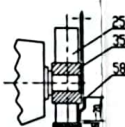


材料表

序号	材料名称	规格	数量	单位
1	Q235-A	100x100x10	1	块
2	Q235-A	100x100x10	1	块
3	Q235-A	100x100x10	1	块
4	Q235-A	100x100x10	1	块
5	Q235-A	100x100x10	1	块
6	Q235-A	100x100x10	1	块
7	Q235-A	100x100x10	1	块
8	Q235-A	100x100x10	1	块
9	Q235-A	100x100x10	1	块
10	Q235-A	100x100x10	1	块
11	Q235-A	100x100x10	1	块
12	Q235-A	100x100x10	1	块
13	Q235-A	100x100x10	1	块
14	Q235-A	100x100x10	1	块
15	Q235-A	100x100x10	1	块
16	Q235-A	100x100x10	1	块
17	Q235-A	100x100x10	1	块
18	Q235-A	100x100x10	1	块
19	Q235-A	100x100x10	1	块
20	Q235-A	100x100x10	1	块
21	Q235-A	100x100x10	1	块
22	Q235-A	100x100x10	1	块
23	Q235-A	100x100x10	1	块
24	Q235-A	100x100x10	1	块
25	Q235-A	100x100x10	1	块
26	Q235-A	100x100x10	1	块
27	Q235-A	100x100x10	1	块
28	Q235-A	100x100x10	1	块
29	Q235-A	100x100x10	1	块
30	Q235-A	100x100x10	1	块
31	Q235-A	100x100x10	1	块
32	Q235-A	100x100x10	1	块
33	Q235-A	100x100x10	1	块
34	Q235-A	100x100x10	1	块
35	Q235-A	100x100x10	1	块
36	Q235-A	100x100x10	1	块
37	Q235-A	100x100x10	1	块
38	Q235-A	100x100x10	1	块



A-A
1:5



技术要求

1. 材料应符合GB/T14405-93规定
2. 制造应符合GB/T14405-93规定

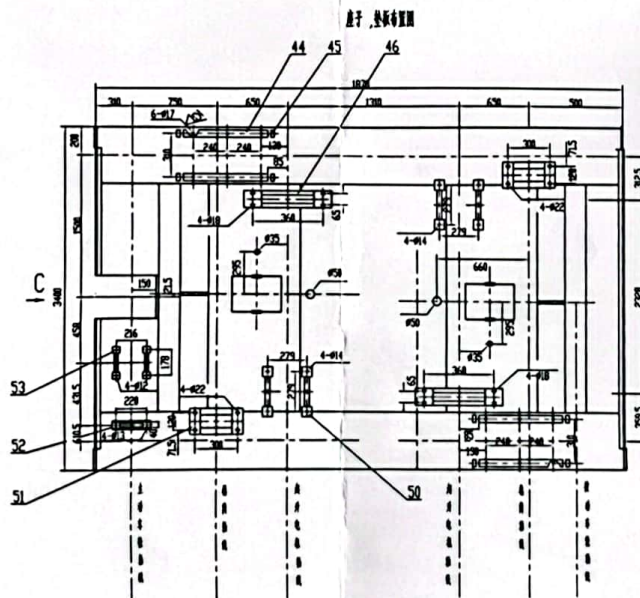
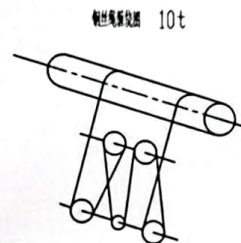
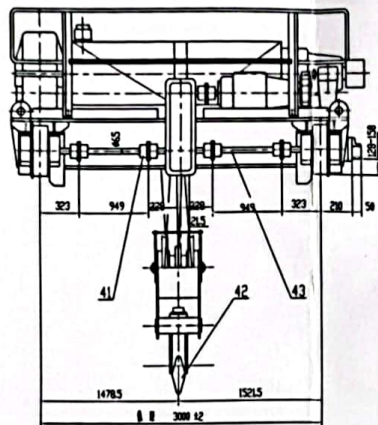
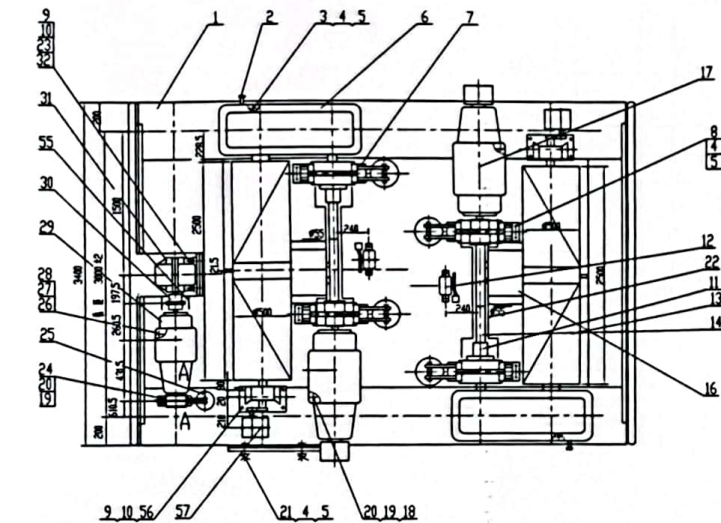
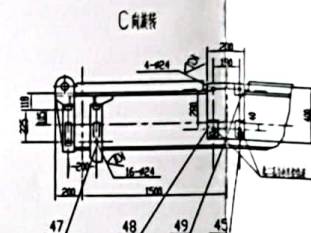
序号	材料名称	规格	数量	单位
39	Q235-A	100x100x10	1	块
40	Q235-A	100x100x10	1	块
41	Q235-A	100x100x10	1	块
42	Q235-A	100x100x10	1	块
43	Q235-A	100x100x10	1	块
44	Q235-A	100x100x10	1	块
45	Q235-A	100x100x10	1	块
46	Q235-A	100x100x10	1	块
47	Q235-A	100x100x10	1	块
48	Q235-A	100x100x10	1	块
49	Q235-A	100x100x10	1	块
50	Q235-A	100x100x10	1	块
51	Q235-A	100x100x10	1	块
52	Q235-A	100x100x10	1	块
53	Q235-A	100x100x10	1	块
54	Q235-A	100x100x10	1	块
55	Q235-A	100x100x10	1	块
56	Q235-A	100x100x10	1	块
57	Q235-A	100x100x10	1	块
58	Q235-A	100x100x10	1	块
59	Q235-A	100x100x10	1	块
60	Q235-A	100x100x10	1	块
61	Q235-A	100x100x10	1	块
62	Q235-A	100x100x10	1	块
63	Q235-A	100x100x10	1	块
64	Q235-A	100x100x10	1	块
65	Q235-A	100x100x10	1	块
66	Q235-A	100x100x10	1	块
67	Q235-A	100x100x10	1	块
68	Q235-A	100x100x10	1	块
69	Q235-A	100x100x10	1	块
70	Q235-A	100x100x10	1	块

序号	材料名称	规格	数量	单位
69	Q235-A	100x100x10	1	块
70	Q235-A	100x100x10	1	块
71	Q235-A	100x100x10	1	块
72	Q235-A	100x100x10	1	块
73	Q235-A	100x100x10	1	块
74	Q235-A	100x100x10	1	块
75	Q235-A	100x100x10	1	块
76	Q235-A	100x100x10	1	块
77	Q235-A	100x100x10	1	块
78	Q235-A	100x100x10	1	块
79	Q235-A	100x100x10	1	块
80	Q235-A	100x100x10	1	块
81	Q235-A	100x100x10	1	块
82	Q235-A	100x100x10	1	块
83	Q235-A	100x100x10	1	块
84	Q235-A	100x100x10	1	块
85	Q235-A	100x100x10	1	块
86	Q235-A	100x100x10	1	块
87	Q235-A	100x100x10	1	块
88	Q235-A	100x100x10	1	块
89	Q235-A	100x100x10	1	块
90	Q235-A	100x100x10	1	块
91	Q235-A	100x100x10	1	块
92	Q235-A	100x100x10	1	块
93	Q235-A	100x100x10	1	块
94	Q235-A	100x100x10	1	块
95	Q235-A	100x100x10	1	块
96	Q235-A	100x100x10	1	块
97	Q235-A	100x100x10	1	块
98	Q235-A	100x100x10	1	块
99	Q235-A	100x100x10	1	块
100	Q235-A	100x100x10	1	块

QD1010.02

10/10t MG

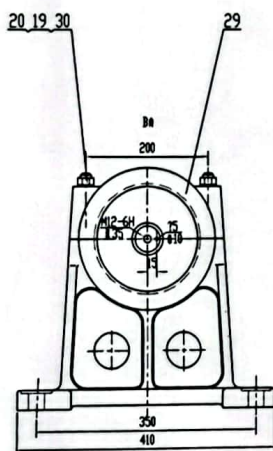
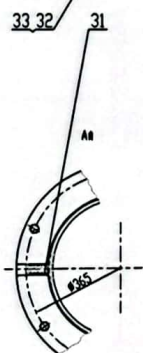
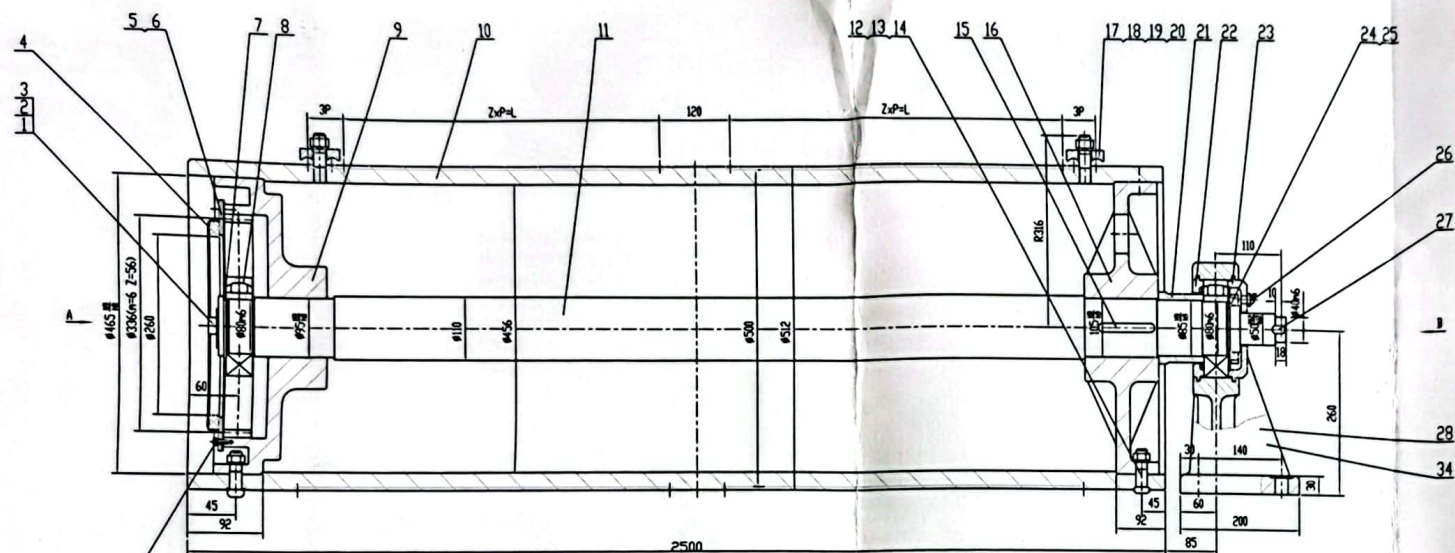
中鼎起重机械有限公司

[illegible]

49	82357	mm	55	0	1	225	225	
48	82349	mm	55	0	2	25	5	
67	82734	mm	100-105-109	0275-8	2	666	132	
66	82735	mm	100-105-109	0275-8	2	655	1	
65	82732	mm	100-105-105-115	0275-8	16	1	16	
64	82308	mm	100	0	1	46	46	
63	Q/80140-98	mm	50x50	0275-8	18	576	156	
62	82637	mm	100	0275-8	2	484	968	
61	82766	mm	100	0	1	708	708	
59	82954	mm	100	0	2	622	1244	
58	J469	mm	75C-400-177-33-1	0	1	165	165	W27.33
57	818C	mm	140	0	2	1166	2332	
56	52324	mm	0	0	4	383	1264	
55	V5172	mm	0	2	2	1866	3733	
54	82783-96	mm	M20x10	8.8	8	834	832	
53	L756	mm	100	0	2	192	224	
52	77938	mm	0	1.3	1	0.854	0.854	
51	GB182-74	mm	6x119-14.5-155	0	1	1	1	
50	GB382-74	mm	0	0275-8	0	2.3	2.3	
49	116101-2-91	mm	101	0	1	015	015	
48	1684	mm	101	0	1	778	778	
48	AL457	mm	101	0	1	2318	2518	mm
47	0	mm	101	0	1	76	76	
46	GB182-74	mm	6x119-14.5-155	0	1	1	1	
45	0	mm	101	0	1	132	132	
44	L757	mm	100	0	2	105	20	
43	GB193-87	mm	12	65Mn	29	0.805	0.06	
42	GB170-96	mm	M2	8.8	26	0.816	0.152	
41	GB1782-96	mm	M20x50	8.8	4	0.958	0.42	
40	52125	mm	0	0	1	152	152	
39	446C	mm	500x2500	0	1	432	432	
38	GB1782-96	mm	M20x45	8.8	4	0.817	0.113	
37	0	mm	M20x45	8.8	4	0.862	0.142	
36	0	mm	M20x45	8.8	1	0.87	0.87	
35	Z299	mm	TV2-200-25	0	1	31	31	
34	GB1782-96	mm	M20x55	8.8	4	0.13	0.52	
33	0	mm	20x60-110-11C-A4	0	1	277	277	W31.5
32	T182C	mm	500x2500	0	1	753	753	
31	17168	mm	10	0	1	9.3	9.3	
30	GB159	mm	101	0	1	137	137	
29	GB1783-96	mm	M20x35	8.8	2	0.885	0.17	
28	0	mm	120130M-6	8.8	1	798	798	
27	GB193-87	mm	15	65Mn	14	0.085	0.12	
26	GB170-96	mm	M5	8.8	14	0.834	0.476	
25	GB1782-96	mm	M20x70	8.8	4	0.13	0.52	
24	0	mm	TV2-200/25	0	1	16	16	
23	GB1783-96	mm	M20x46	8.8	6	0.879	0.28	
22	GB193-87	mm	18	65Mn	4	0.802	0.012	
21	GB1610-96	mm	M10	8.8	4	0.911	0.644	
20	GB1783-96	mm	M20x45	8.8	4	0.830	0.152	
19	52324	mm	0	0	1	257	257	
18	0	mm	120130M-6	0	1	1212	1212	mm
17	116101	mm	101	0	1	972	972	
16	GB1782-96	mm	M20x10	8.8	2	0.45	0.9	
15	417C	mm	12030	0	1	14	14	
14	53173	mm	0	0	1	49	48	
13	0	mm	TV2-400-70	0	1	59	59	
12	GB1783-96	mm	M20x46	8.8	4	0.899	0.296	
11	GB193-87	mm	24	65Mn	8	0.812	0.096	
10	GB1782-96	mm	M20x40	8.8	8	0.424	1.39	
9	GB1782-96	mm	M20x40	8.8	8	0.424	1.39	
8	0	mm	20x60-110-11C-A4	0	2	298	1780	W31.5
7	Q/701074-85	mm	168	0	2	637	674	
6	GB193-87	mm	29	65Mn	12	0.805	0.09	
5	GB1610-96	mm	M20	8.8	12	0.86	0.72	
4	GB1782-96	mm	M20	8.8	2	0.242	2.404	
3	17167	mm	11	0	1	31	31	
2	0	mm	178229M-8	8.8	1	200	200	
1	0	mm	0	0	1	1324	1324	
1	0	mm	0	0	0	0	0	0
1	0	mm	0	0	0	0	0	0
1	0	mm	0	0	0	0	0	0
1	0	mm	0	0	0	0	0	0
1	0	mm	0	0	0	0	0	0
1	0	mm	0	0	0	0	0	0
1	0	mm	0	0	0	0	0	0
1	0	mm	0	0	0	0	0	0
1	0	mm	0	0	0	0	0	0
1	0	mm	0	0	0	0	0	0
1	0	mm	0	0	0	0	0	0
1	0	mm	0	0	0	0	0	0
1	0	mm	0	0	0	0	0	0
1	0	mm	0	0	0	0	0	0
1	0	mm	0	0	0	0	0	0
1	0	mm	0	0	0	0	0	0
1	0	mm	0	0	0	0	0	0
1	0	mm	0	0	0	0	0	0
1	0	mm	0	0	0	0	0	0
1	0	mm	0	0	0	0	0	0
1	0	mm	0	0	0	0	0	0
1	0	mm	0	0	0	0	0	0
1	0	mm	0	0	0	0	0	0
1	0	mm	0	0	0	0	0	0
1	0	mm	0	0	0	0	0	0
1	0	mm	0	0	0	0	0	0
1	0	mm	0	0	0	0	0	0
1	0	mm	0	0	0	0	0	0
1	0	mm	0	0	0	0	0	0
1	0	mm	0	0	0	0	0	0
1	0	mm	0	0	0	0	0	0
1	0	mm	0	0	0	0	0	0
1	0	mm	0	0	0	0	0	0
1	0	mm	0	0	0	0	0	0
1	0	mm	0	0	0	0	0	0
1	0	mm	0	0	0	0	0	0
1	0	mm	0	0	0	0	0	0
1	0	mm	0	0	0	0	0	0
1	0	mm	0	0	0	0	0	0
1	0	mm	0	0	0	0	0	0
1	0	mm	0	0	0	0	0	0
1	0	mm	0	0	0	0	0	0
1	0	mm	0	0	0	0	0	0
1	0	mm	0	0	0	0	0	0
1	0	mm	0	0	0	0	0	0
1	0	mm	0	0	0	0	0	0
1	0	mm	0	0	0	0	0	0
1	0	mm	0	0	0	0	0	0
1	0	mm	0	0	0	0	0	0
1	0	mm	0	0	0	0	0	0
1	0	mm	0	0	0	0	0	0
1	0	mm	0	0	0	0	0	0
1	0	mm	0	0	0	0	0	0
1	0	mm	0	0	0	0	0	0
1	0	mm	0	0	0	0	0	0
1	0	mm	0	0	0	0	0	0
1	0	mm	0	0	0	0	0	0
1	0	mm	0	0	0	0	0	0
1	0	mm	0	0	0	0	0	0
1	0	mm	0	0	0	0	0	0
1	0	mm	0	0	0	0	0	0
1	0	mm	0	0	0	0	0	0
1	0	mm	0	0	0	0	0	0
1	0	mm	0	0	0	0	0</	

QD1010.02

中原圣起有限公司



标准示例

T1024 6000 $\phi 500 \times 2500$ (A)

标准示例

标准示例

标准示例

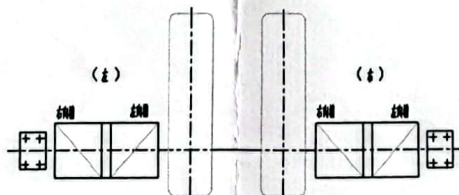
技术要求

参照GB/T 1024-2000标准

垂直度要求

(A)

(B)



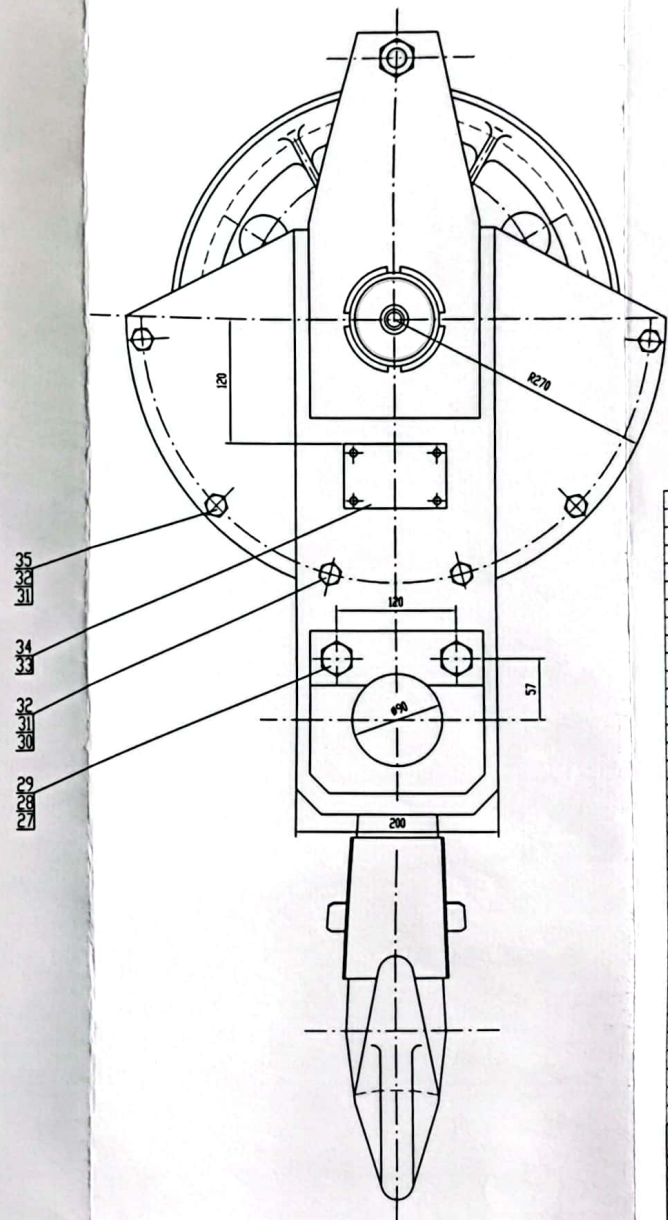
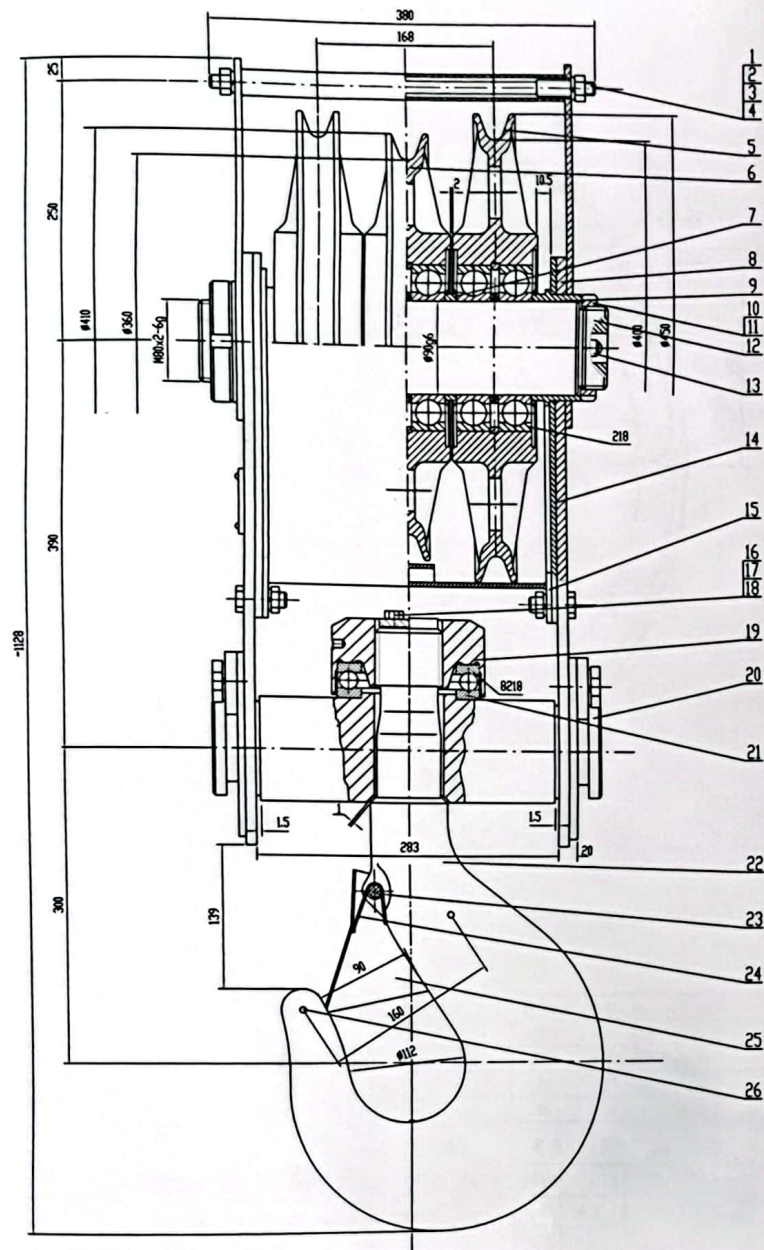
序号	代号	名称	规格	数量	材料	备注
24	G893-87	轴套	65Mn	6	0.0015	0.009
33	G85781-86	轴套	M8x16	6	0.012	0.072
32	G85781-86	轴套	M8x16	6	0.012	0.072
31	G85781-86	轴套	M8x16	6	0.012	0.072
30	G898-88	轴套	M20x120	4	0.002	0.004
29	T1024-53	轴套	HT200	1	8.9	8.9
28	T1024-21	轴套	HT200	1	32	32
27	G81096-79	轴套	M10x22	45	0.0125	0.0125
26	G81153-79	轴套	M10x1	1	0.056	0.056
25	G8858-88	轴套	Q235-B	1	0.036	0.036
24	G8812-88	轴套	M72x2	45	0.509	0.509
23	T1024-52	轴套	HT150	1	2.4	2.4
22	T1024-51	轴套	HT150	1	1.7	1.7
21	T1024-61	轴套	HT150	1	2.1	2.1
20	G893-87	轴套	M20	6	0.015	0.09
19	G841-86	轴套	M20	6	0.062	0.372
18	Q/D0150-79	轴套	Q235-B	4	0.37	1.48
17	G8898-88	轴套	M20x60	4	0.177	0.608
16	T1024-32	轴套	HT200	1	45	45
15	G81096-79	轴套	M14x80	45	0.076	0.076
14	G893-87	轴套	M16	16	0.008	0.012
13	G86172-86	轴套	M16	16	0.019	0.304
12	T1020-12	轴套	M2	45	0.11	1.76
11	T1024-11	轴套	M2	45	0.11	1.76
10	T1024-31	轴套	M20x2500	1	470	470
9	T1024-71	轴套	ZG340-640	1	64	64
8	G8281-84	轴套	G16	2	6.2	12.4
7	T1024-91	轴套	Q195-F	1	0.2	0.2
6	T1020-54	轴套	Q195-F	1	0.11	0.11
5	T1020-81	轴套	M6	1	0.043	0.043
4	G810143-91	轴套	M10x16x450	2	0.022	0.044
3	Q/D0143-91	轴套	M3	1	0.02	0.02
2	Q/D0142-91	轴套	M3	1	0.02	0.02
1	G85781-86	轴套	M16x35	4	0.085	0.085

序号	代号	名称	规格	数量	材料	备注
1	G85781-86	轴套	M16x35	4	0.085	0.085
2	Q/D0142-91	轴套	M3	1	0.02	0.02
3	Q/D0143-91	轴套	M3	1	0.02	0.02
4	G810143-91	轴套	M10x16x450	2	0.022	0.044
5	T1020-81	轴套	M6	1	0.043	0.043
6	T1020-54	轴套	Q195-F	1	0.11	0.11
7	T1024-91	轴套	Q195-F	1	0.2	0.2
8	G8281-84	轴套	G16	2	6.2	12.4
9	T1024-71	轴套	ZG340-640	1	64	64
10	T1024-31	轴套	M20x2500	1	470	470
11	T1024-11	轴套	M2	45	0.11	1.76
12	T1020-12	轴套	M2	45	0.11	1.76
13	G86172-86	轴套	M16	16	0.019	0.304
14	G893-87	轴套	M16	16	0.008	0.012
15	G81096-79	轴套	M14x80	45	0.076	0.076
16	T1024-32	轴套	HT200	1	45	45
17	G8898-88	轴套	M20x60	4	0.177	0.608
18	Q/D0150-79	轴套	Q235-B	4	0.37	1.48
19	G841-86	轴套	M20	6	0.062	0.372
20	G893-87	轴套	M20	6	0.015	0.09
21	T1024-61	轴套	HT150	1	2.1	2.1
22	T1024-51	轴套	HT150	1	1.7	1.7
23	T1024-52	轴套	HT150	1	2.4	2.4
24	G8812-88	轴套	M72x2	45	0.509	0.509
25	G8858-88	轴套	Q235-B	1	0.036	0.036
26	G81153-79	轴套	M10x1	1	0.056	0.056
27	G81096-79	轴套	M10x22	45	0.0125	0.0125
28	T1024-21	轴套	HT200	1	32	32
29	T1024-53	轴套	HT200	1	8.9	8.9
30	G898-88	轴套	M20x120	4	0.002	0.004
31	G85781-86	轴套	M8x16	6	0.012	0.072
32	G85781-86	轴套	M8x16	6	0.012	0.072
33	G893-87	轴套	M8	6	0.0015	0.009
34	G85781-86	轴套	M16x35	4	0.085	0.085

T1024

规格
 $\phi 500 \times 2500$

中原圣地有限公司



技术要求

1. 滑油室腔后盖密封良好, 而无漏油现象
2. 滑油室腔体其垂直中心和导向键中心线重合
3. 滑油室腔体其垂直中心与同轴环的轴心线重合
4. 滑油室腔体其垂直中心与同轴环的轴心线重合
5. 序号23 滑油室腔体在序号25 安全板上, 即后安全板
6. 序号26 滑油室腔体在序号25 安全板上, 即后安全板

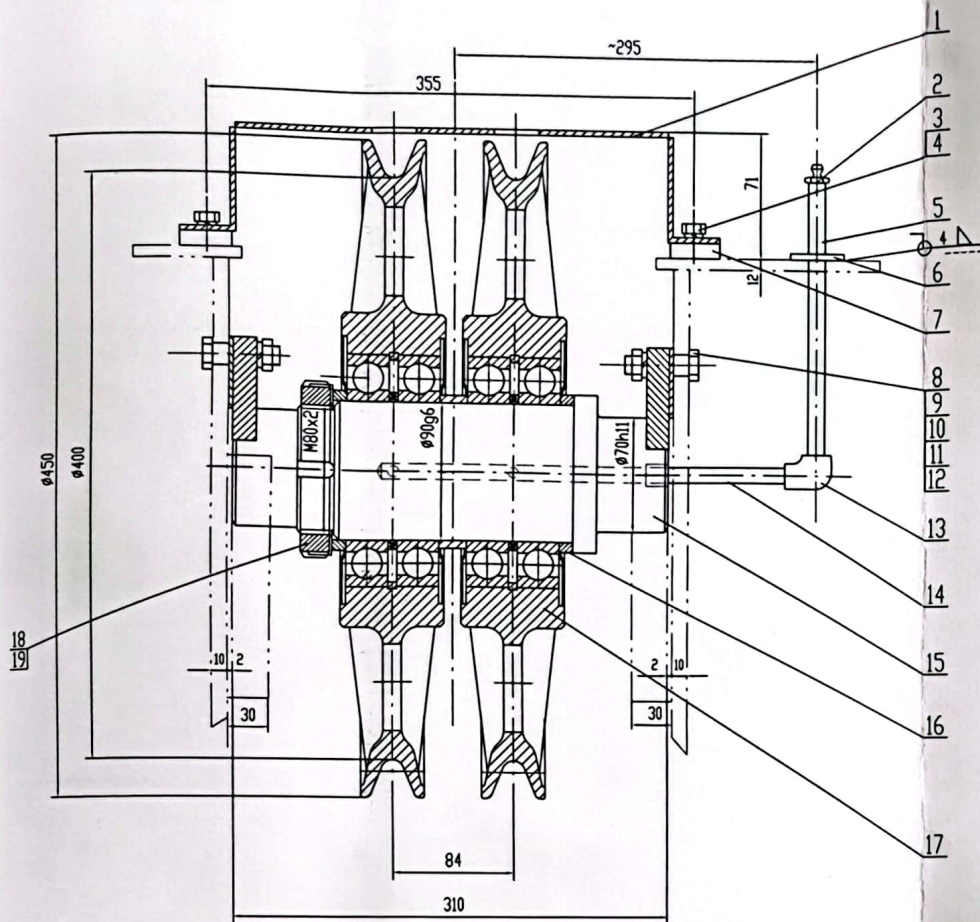
35	G85781-86	滑油 M12X30	4.6	8	0.036	0.288	
34	G867-86	滑油 M12X30	4.6	8	0.036	0.288	
33	3897B	滑油 M12X30	4.6	8	0.036	0.288	
32	G893-87	滑油 M12	4.6	8	0.036	0.288	
31	G841-86	滑油 M12	4.6	8	0.036	0.288	
30	G85781-86	滑油 M12X40	4.6	8	0.036	0.288	
29	Q/D0147-91	滑油 M12	4.6	8	0.036	0.288	
28	G893-87	滑油 M12	4.6	8	0.036	0.288	
27	G85781-86	滑油 M12X35	4.6	8	0.036	0.288	
26	G883-13	滑油 M12X40	4.6	8	0.036	0.288	
25	G883-14	滑油 M12	4.6	8	0.036	0.288	
24	G883-84	滑油 M12	4.6	8	0.036	0.288	
23	G883-12	滑油 M12	4.6	8	0.036	0.288	
22	G883-83	滑油 M12	4.6	8	0.036	0.288	
21	G8301-84	滑油 M12	4.6	8	0.036	0.288	
20	G883-82	滑油 M12	4.6	8	0.036	0.288	
19	G883-81	滑油 M12	4.6	8	0.036	0.288	
18	G883-93	滑油 M12	4.6	8	0.036	0.288	
17	G883-92	滑油 M12	4.6	8	0.036	0.288	
16	G85781-86	滑油 M12X20	4.6	8	0.036	0.288	
15	G883-13	滑油 M12	4.6	8	0.036	0.288	
14	G883-91	滑油 M12	4.6	8	0.036	0.288	
13	G81152-79	滑油 M12X1	4.6	8	0.036	0.288	
12	G883-11	滑油 M12	4.6	8	0.036	0.288	
11	G8858-88	滑油 M12	4.6	8	0.036	0.288	
10	G8812-88	滑油 M12X2	4.6	8	0.036	0.288	
9	G883-62	滑油 M12	4.6	8	0.036	0.288	
8	G883-2	滑油 M12	4.6	8	0.036	0.288	
7	G859-61	滑油 M12	4.6	8	0.036	0.288	
6	G883-1	滑油 M12	4.6	8	0.036	0.288	
5	G859-2	滑油 M12	4.6	8	0.036	0.288	
4	G883-61	滑油 M12X30	4.6	8	0.036	0.288	
3	G893-87	滑油 M12	4.6	8	0.036	0.288	
2	G841-86	滑油 M12	4.6	8	0.036	0.288	
1	G8953-88	滑油 M12X300	4.6	8	0.036	0.288	

序号	代号	名称	材料	数量	重量 (kg)	备注
35	G85781-86	滑油 M12X30	4.6	8	0.036	0.288
34	G867-86	滑油 M12X30	4.6	8	0.036	0.288
33	3897B	滑油 M12X30	4.6	8	0.036	0.288
32	G893-87	滑油 M12	4.6	8	0.036	0.288
31	G841-86	滑油 M12	4.6	8	0.036	0.288
30	G85781-86	滑油 M12X40	4.6	8	0.036	0.288
29	Q/D0147-91	滑油 M12	4.6	8	0.036	0.288
28	G893-87	滑油 M12	4.6	8	0.036	0.288
27	G85781-86	滑油 M12X35	4.6	8	0.036	0.288
26	G883-13	滑油 M12X40	4.6	8	0.036	0.288
25	G883-14	滑油 M12	4.6	8	0.036	0.288
24	G883-84	滑油 M12	4.6	8	0.036	0.288
23	G883-12	滑油 M12	4.6	8	0.036	0.288
22	G883-83	滑油 M12	4.6	8	0.036	0.288
21	G8301-84	滑油 M12	4.6	8	0.036	0.288
20	G883-82	滑油 M12	4.6	8	0.036	0.288
19	G883-81	滑油 M12	4.6	8	0.036	0.288
18	G883-93	滑油 M12	4.6	8	0.036	0.288
17	G883-92	滑油 M12	4.6	8	0.036	0.288
16	G85781-86	滑油 M12X20	4.6	8	0.036	0.288
15	G883-13	滑油 M12	4.6	8	0.036	0.288
14	G883-91	滑油 M12	4.6	8	0.036	0.288
13	G81152-79	滑油 M12X1	4.6	8	0.036	0.288
12	G883-11	滑油 M12	4.6	8	0.036	0.288
11	G8858-88	滑油 M12	4.6	8	0.036	0.288
10	G8812-88	滑油 M12X2	4.6	8	0.036	0.288
9	G883-62	滑油 M12	4.6	8	0.036	0.288
8	G883-2	滑油 M12	4.6	8	0.036	0.288
7	G859-61	滑油 M12	4.6	8	0.036	0.288
6	G883-1	滑油 M12	4.6	8	0.036	0.288
5	G859-2	滑油 M12	4.6	8	0.036	0.288
4	G883-61	滑油 M12X30	4.6	8	0.036	0.288
3	G893-87	滑油 M12	4.6	8	0.036	0.288
2	G841-86	滑油 M12	4.6	8	0.036	0.288
1	G8953-88	滑油 M12X300	4.6	8	0.036	0.288

8883

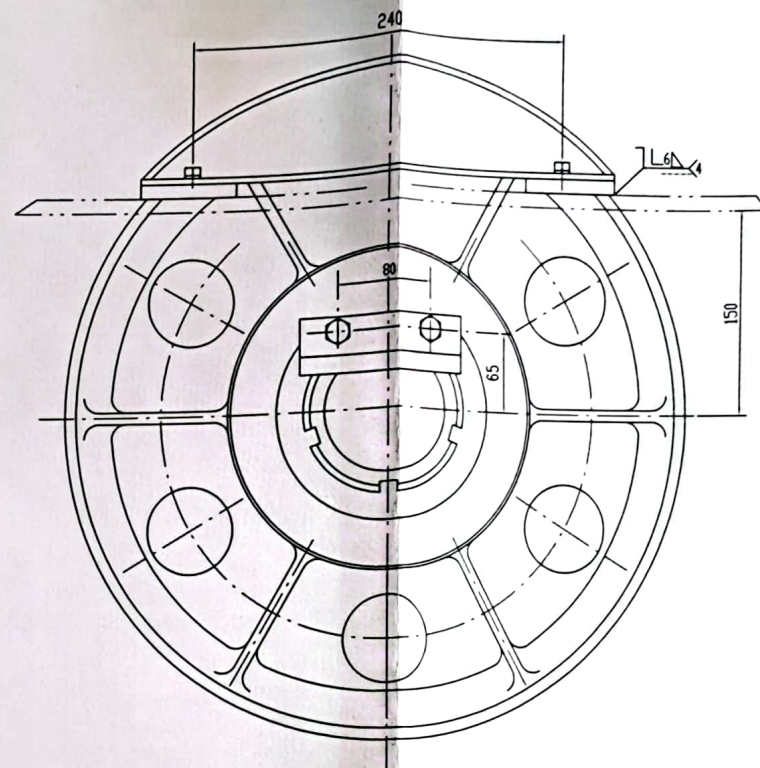
吊钩组

中源圣达有限公司



技术要求

1. 装配好后滑轮应能灵活地旋转而无侧向摆动。
2. 应注意使轴的润滑油孔与间隔环的油槽对准。
3. 符号“1”为本厂装配焊。



19	GB858-88	全鋼 80	Q235-B	1	0.043	0.043
18	GB812-88	厚鋼板 M80X2	45	1	0.6	0.6
17	GB592	厚板 厚 400X82	鋼件	2	31.05	62.10
16	GB59-61	鋼板 10	HT150	3	0.18	0.54
15	GB59-11	鋼板	45	1	13.1	13.1
14	GB59-82	鋼板 14X3-140	Q235-B	1	0.112	0.112
13	Q/DQ171-81	鋼材 ZG1/4"	Q235-B	1	0.075	0.075
12	GB59-93	鋼板 鋼板	Q235-B	2	0.79	1.58
11	GB59-92	鋼板	Q235-BF	2 塊	0.133	0.266
10	GB93-87	鋼板 16	65Mn	4	0.008	0.032
9	GB6170-86	螺絲 M16	8 號	4	0.004	0.016
8	GB5783-86	螺絲 M16X50	8 號	4	0.106	0.424
7	GB59-91	鋼板	Q235-BF	4	0.34	1.36
6	GB58-91	鋼墊	Q235-BF	1	0.147	0.147

[illegible]