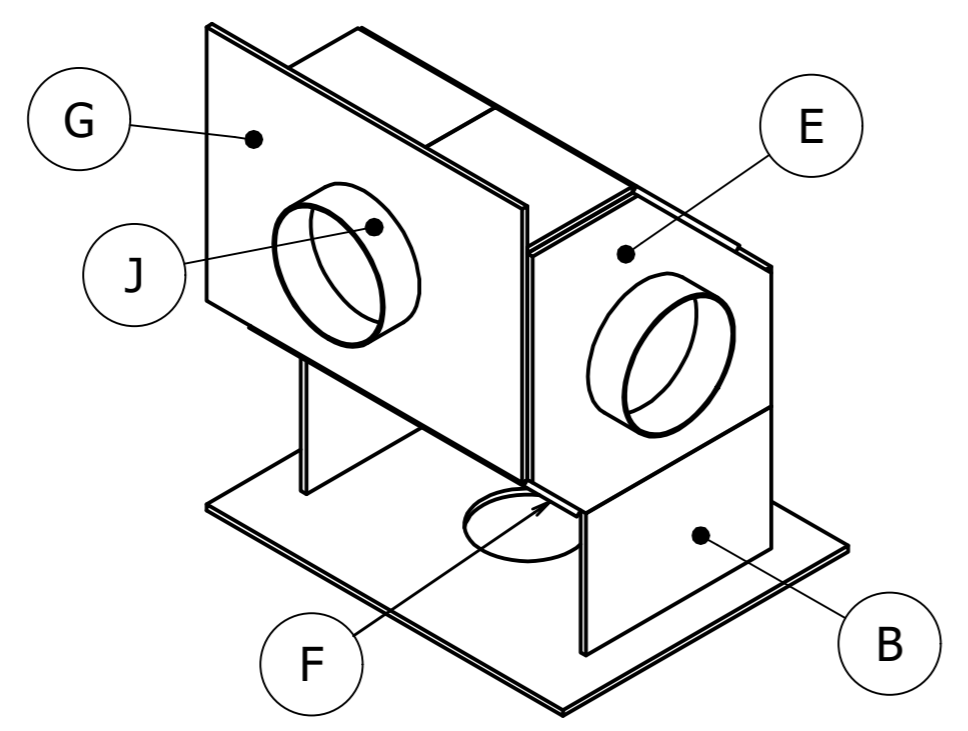
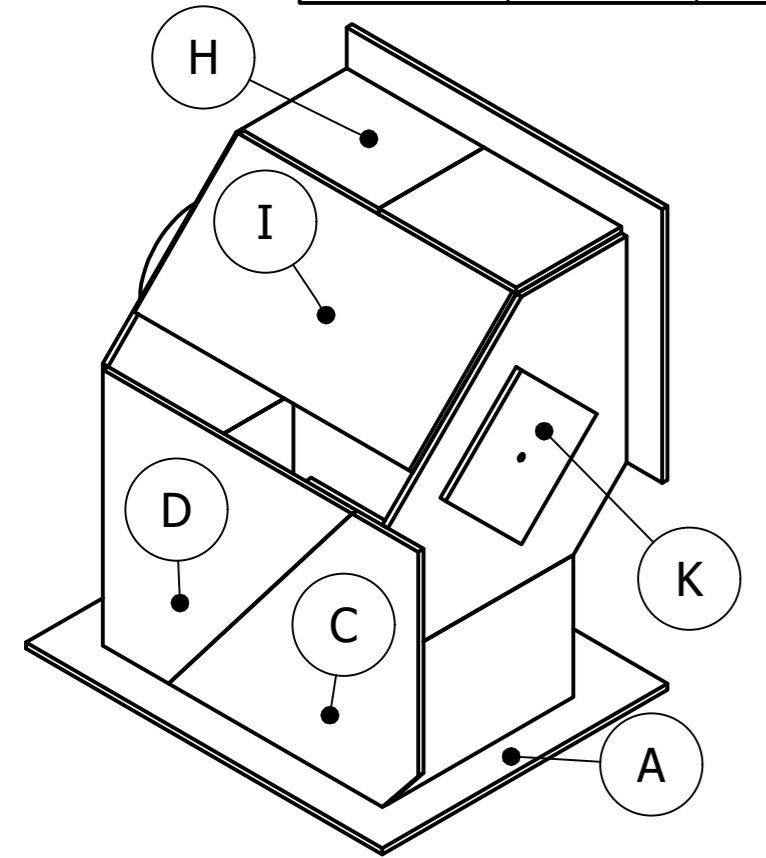
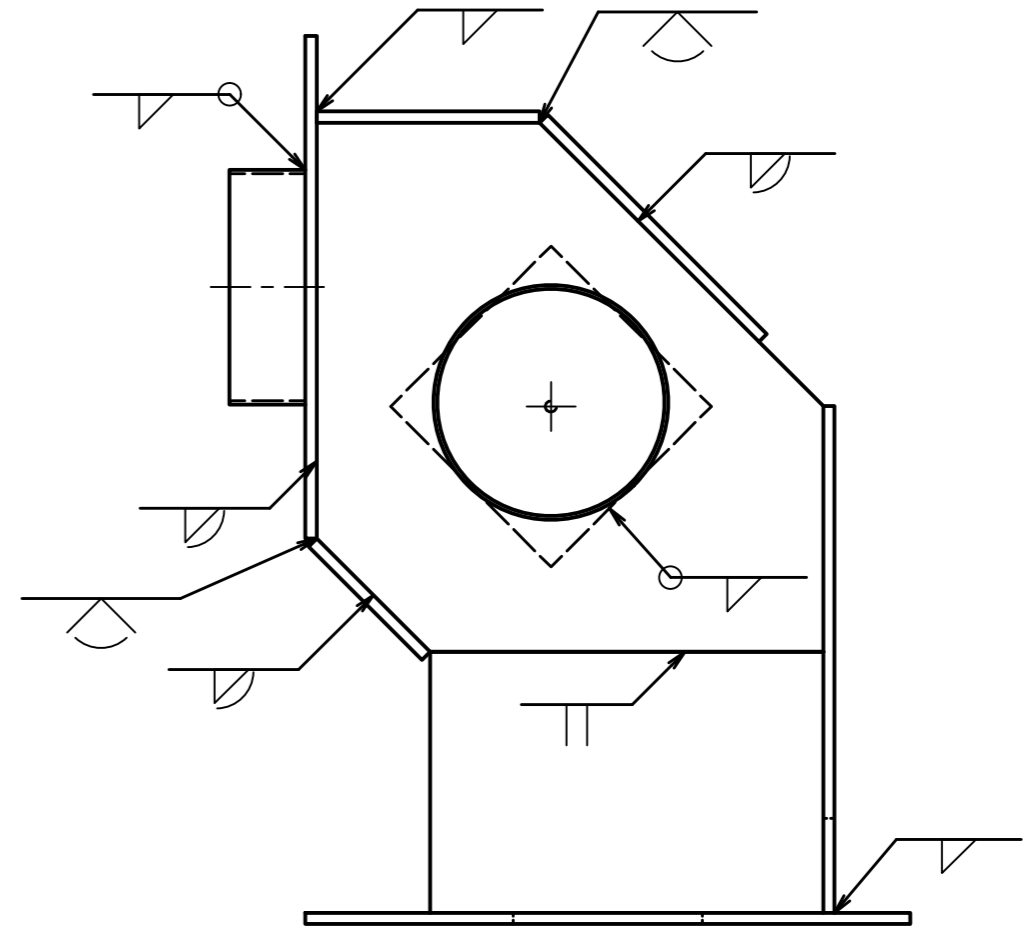
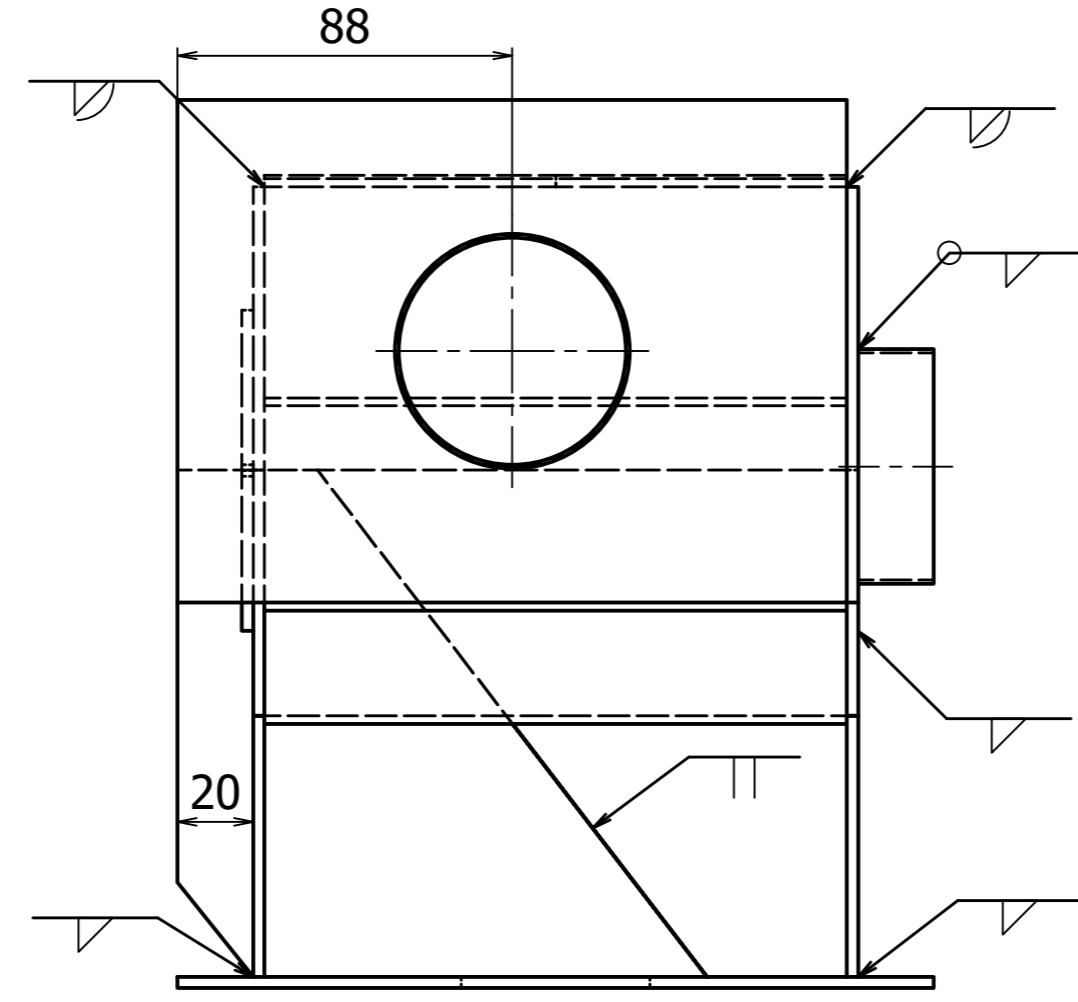
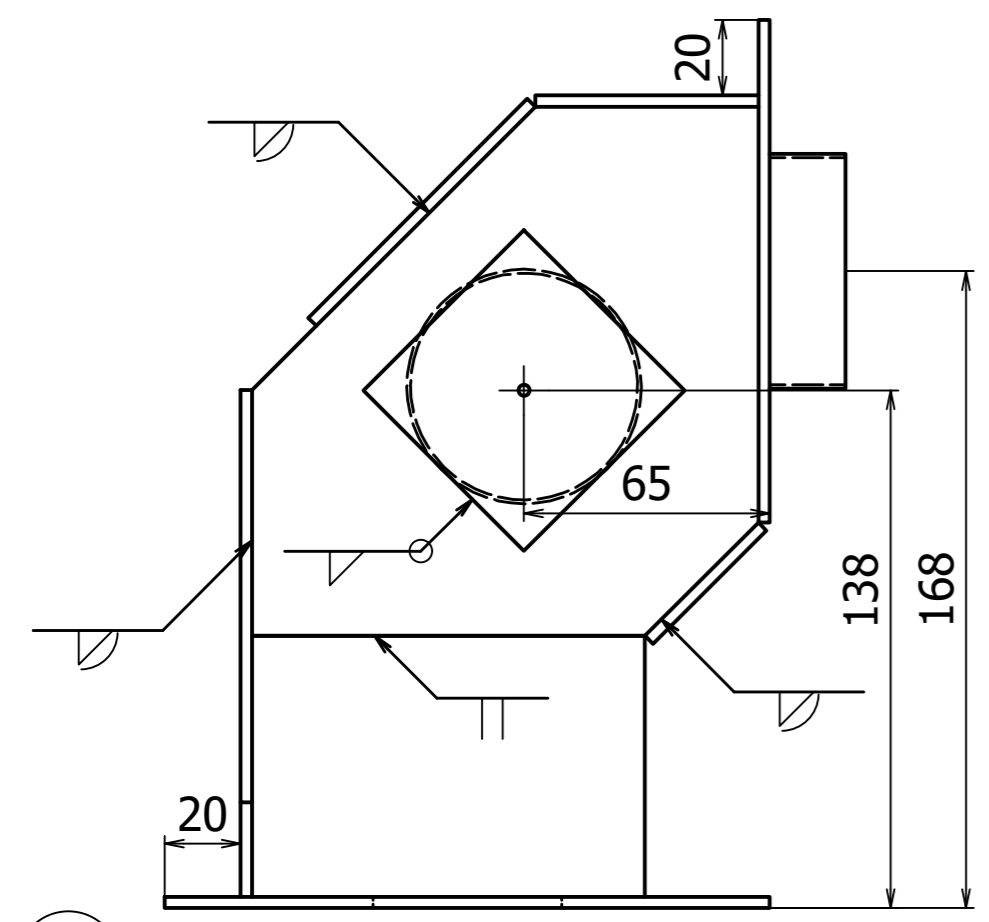
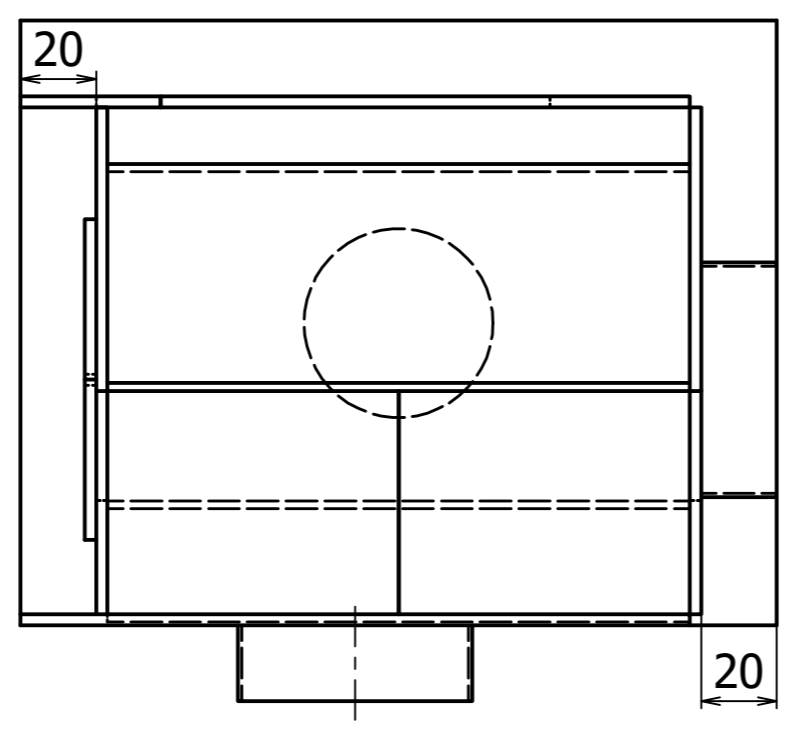


ALL DIMENSIONS IN MILLIMETERS

ITEM	QTY	MATERIAL	DIMENSIONS	REMARKS
A	1	AA5052	Plerte 200×160×3.0	
B	2	AA5052	Plerte 104×69×3.0	
C	1	AA5052	Plerte 140×134×3.0 as per sketch	
D	1	AA5052	Plerte 140×134×3.0 as per sketch	
E	2	AA5052	Plerte 134×140×3.0 as per sketch	
F	1	AA5052	Plerte 154×42.4×3.0	
G	1	AA5052	Plerte 177×133×3.0	
H	2	AA5052	Plerte 77×59×3.0	
I	1	AA5052	Plerte 154×82×3.0	
J	2	AA6061	Tube OD 62×20×3.0	
K	1	AA5052	Plerte 60×60×3.0	φ3mm hole in center

**INSTRUCTIONS :**

1. WELDING PROCESS : GTAW(TIG)141.
2. WELDING POSITIONS : ALL EXCEPT VERTICAL DOWN.
3. NO GAPS ARE ALLOWED ON THE BUTT & CORNER WELD JOINTS.
4. ALL BUTT & CORNER WELDS MUST HAVE FULL PENETRATIONS.
5. ALL THE WELDING TO BE CARRIED OUT WITH BASE PLETE "A" IN THE FLAT POSITION.
6. ALL LEG SIZES OF FILLET WELDS : 4.0mm WITH TOLERANCE (+2.0mm/-0.0mm).
7. OUTSIDE CORNER WELD RADII : 3.0mm WITH TOLERANCE (+1.0mm/-0.9mm).
8. ALL WELDS MUST BE COMPLETED IN ONE PASS ONLY WITH THE ADDITION OF FILLER WIRE.



Test Project for the 47th WorldSkills  
Competition in Lyon, France 2024.  
Copyright © 2024 WorldSkills International.  
All Rights Reserved.



Skill: Welding		OR
Scale: N. T. S	Date: 25/08/2022 Paper: A3	
Drawn / Design by: Takeshi Tokimatsu JP		Drawing No: WSC2024_TP10_JP_AL_ASSEMBLY_ISO A
Description: Aluminium-Assembly & Symbols		Rev: Page: 1 of 1